

Next Sample : Mouse C57BL CBC / DIFF 🔍 📄 ?

Ready to Run 🔔 Autosampler Startup Complete

Run Screen - [CBCDiffRetic1] _ □ ×
 Open Configure Hide Display Off Arrange Print Help

Header - WB1 Playback	
SID	CONTROL2085
Aspiration Date/Time	11/16/16 02:07:55 PM
Sample Type	CONTROL
Sample Selectivity	CBC\DIFF\RETIC
Rack & Position	0 0
Species	Human
Sequence	7
Instrument Number	kei
Cal Factors	Stored

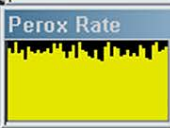
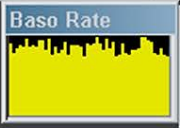
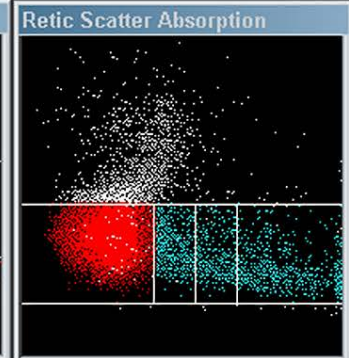
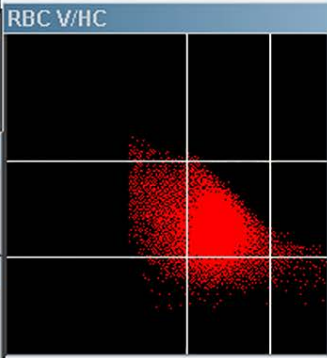
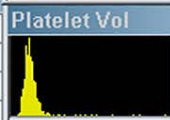
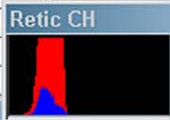
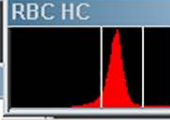
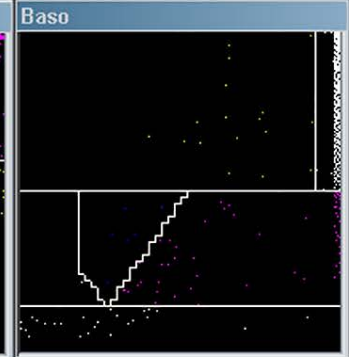
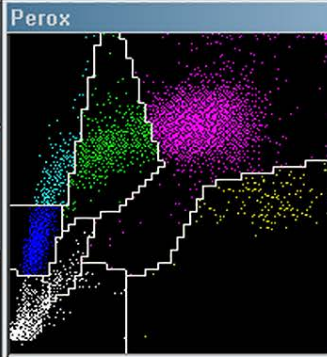
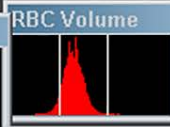
FOR LABORATORY USE ONLY

Routine Retic				
	%	#		
Retic	3.25	139.3	x10 ⁹ cel	
CHr		23.8	pg	
CHm		25.9	pg	

Routine	CBC	
WBC	6.89	x10 ³ cells/μL
RBC	4.29	x10 ⁶ cells/μL
HGB	11.5	g/dL
HCT	33.6	%
MCV	78.4	fL
MCH	26.8	pg
MCHC	34.1	g/dL
CHCM	32.4	g/dL
CH	25.3	pg
RDW	15.2	%
HDW	2.98	g/dL
PLT	201	x10 ³ cells/μL
MPV	7.4	fL

Routine WBC Differential				
	%	#		
WBC		6.89	x10 ³ cells/μL	
Neut	57.6	3.97	x10 ³ cells/μL	
Lymph	26.5	1.82	x10 ³ cells/μL	
Mono	9.3	0.64	x10 ³ cells/μL	
Eos	2.4	0.17	x10 ³ cells/μL	
Baso	0.3	0.02	x10 ³ cells/μL	
LUC	3.8	0.26	x10 ³ cells/μL	
NRBC	0.0	0.00	x10 ⁹ cells/L	
LI		1.61		
MPXI		-8.4		
WBPC		6.88	x10 ³ cells/μL	

Additional Routine Parameters		
%Blast Suspect	0.0	
%Hyper	0.5	
%Hypo	7.0	
%Macro	0.1	
%Micro	5.4	
RBC Fragments	0.01	x10 ⁶ cells/μL
RBC Ghosts	0.05	x10 ⁶ cells/μL
Neut X	56.5	
Neut Y	71.2	



Sample/System Flags

Morphology Flags

